

# The edible plant microbiome: evidence for the occurrence of fruit and vegetable bacteria in the human gut

Wisnu Adi Wicaksono, Tomislav Cernava, Birgit Wassermann, Ahmed Abdelfattah, Maria J. Soto-Giron, Gerardo V. Toledo, Suvi M. Virtanen, Mikael Knip, Heikki Hyöty & Gabriele Berg

To cite this article: Wisnu Adi Wicaksono, Tomislav Cernava, Birgit Wassermann, Ahmed Abdelfattah, Maria J. Soto-Giron, Gerardo V. Toledo, Suvi M. Virtanen, Mikael Knip, Heikki Hyöty & Gabriele Berg (2023) The edible plant microbiome: evidence for the occurrence of fruit and vegetable bacteria in the human gut, *Gut Microbes*, 15:2, 2258565, DOI: [10.1080/19490976.2023.2258565](https://doi.org/10.1080/19490976.2023.2258565)

To link to this article: <https://doi.org/10.1080/19490976.2023.2258565>



© 2023 The Author(s). Published with license by Taylor & Francis Group, LLC.



[View supplementary material](#)



Published online: 23 Sep 2023.



[Submit your article to this journal](#)



Article views: 7836



[View related articles](#)



[View Crossmark data](#)

# The edible plant microbiome: evidence for the occurrence of fruit and vegetable bacteria in the human gut

Wisnu Adi Wicaksono<sup>a</sup>, Tomislav Cernava<sup>a,b</sup>, Birgit Wassermann<sup>a</sup>, Ahmed Abdelfattah<sup>a,c</sup>, Maria J. Soto-Giron<sup>d</sup>, Gerardo V. Toledo<sup>d</sup>, Suvi M. Virtanen<sup>e,f,g,h</sup>, Mikael Knip<sup>i,j</sup>, Heikki Hyöty<sup>k</sup>, and Gabriele Berg<sup>a,c,l</sup>

<sup>a</sup>Institute of Environmental Biotechnology, Graz University of Technology, Graz, Austria; <sup>b</sup>School of Biological Sciences, Faculty of Environmental and Life Sciences, University of Southampton, Southampton, UK; <sup>c</sup>Leibniz Institute for Agricultural Engineering and Bioeconomy (ATB), Potsdam, Germany; <sup>d</sup>Solarea Bio, Cambridge, MA, USA; <sup>e</sup>Finnish Institute for Health and Welfare, Helsinki, Finland; <sup>f</sup>Center for Child Health Research, Tampere University and Tampere University Hospital, Tampere, Finland; <sup>g</sup>Faculty of Social Sciences, Tampere University, Tampere, Finland; <sup>h</sup>Research, Development and Innovation Center, Tampere University Hospital, Tampere, Finland; <sup>i</sup>Research Program for Clinical and Molecular Metabolism, Faculty of Medicine, University of Helsinki, Helsinki, Finland; <sup>j</sup>Pediatric Research Center, Children's Hospital, University of Helsinki, Helsinki, Finland; <sup>k</sup>Faculty of Medicine and Health Technology, Tampere University, and Fimlab Laboratories, Tampere, Finland; <sup>l</sup>Institute for Biochemistry and Biology, University of Potsdam, Potsdam, Germany

## ABSTRACT

Diversity of the gut microbiota is crucial for human health. However, whether fruit and vegetable associated bacteria contribute to overall gut bacterial diversity is still unknown. We reconstructed metagenome-assembled genomes from 156 fruit and vegetable metagenomes to investigate the prevalence of associated bacteria in 2,426 publicly available gut metagenomes. The microbiomes of fresh fruits and vegetables and the human gut are represented by members in common such as *Enterobacteriales*, *Burkholderiales*, and *Lactobacillales*. Exposure to bacteria via fruit and vegetable consumption potentially has a beneficial impact on the functional diversity of gut microbiota particularly due to the presence of putative health-promoting genes for the production of vitamin and short-chain fatty acids. In the human gut, they were consistently present, although at a low abundance, approx. 2.2%. Host age, vegetable consumption frequency, and the diversity of plants consumed were drivers favoring a higher proportion. Overall, these results provide one of the primary links between the human microbiome and the environmental microbiome. This study revealed evidence that fruit and vegetable-derived microbes could be found in the human gut and contribute to gut microbiome diversity.

## ARTICLE HISTORY

Received 19 June 2023  
Revised 30 August 2023  
Accepted 8 September 2023

## KEYWORDS

Plant microbiome; fruit; and vegetable; metagenome-assembled genomes; gut microbiome


## Introduction

The composition and function of the human gut microbiota are closely linked to our health during our whole lifespan. Gut microbiota assembly is a complex process involving microbial seeding and succession driven by ecological forces and subject to environmental conditions.<sup>1</sup> Microbiome assembly starts during birth, and babies acquire their first microbiota inoculum from their mother and other humans as well as the local environment.<sup>2,3</sup> The development of the gut microbiota during early life depends on breast-feeding and environmental exposures and is critical for immune system development and long-term health outcomes.<sup>4–6</sup> Related to this, a growing body of evidence has shown that changes in the composition and diversity of the gut

microbiota are linked to metabolic disorders such as obesity and type 2 diabetes mellitus,<sup>4,7</sup> and chronic diseases such as asthma and type 1 diabetes.<sup>6,8</sup> Hence, it is of utmost importance to understand the factors influencing the composition and diversity of the gut microbiota.

Diet is a major driving factor shaping the composition of the gut microbiota. The impact of food choices, food and nutrient intake, different diet styles, and nutrition on the gut microbiome have been studied.<sup>9,10</sup> During early life, the cessation of breastfeeding and the introduction of solid foods impact the maturation of the gut microbiome.<sup>5,11,12</sup> Among solid foods, fruit, and vegetables are commonly consumed during early childhood. Fruits and vegetables do not only contain nutrients and

**CONTACT** Wisnu Adi Wicaksono  [wisnu.wicaksono@tugraz.at](mailto:wisnu.wicaksono@tugraz.at); Gabriele Berg  [gabriele.berg@tugraz.at](mailto:gabriele.berg@tugraz.at)  Institute of Environmental Biotechnology, Graz University of Technology, Petersgasse 12, Graz 8010, Austria

 Supplemental data for this article can be accessed online at <https://doi.org/10.1080/19490976.2023.2258565>

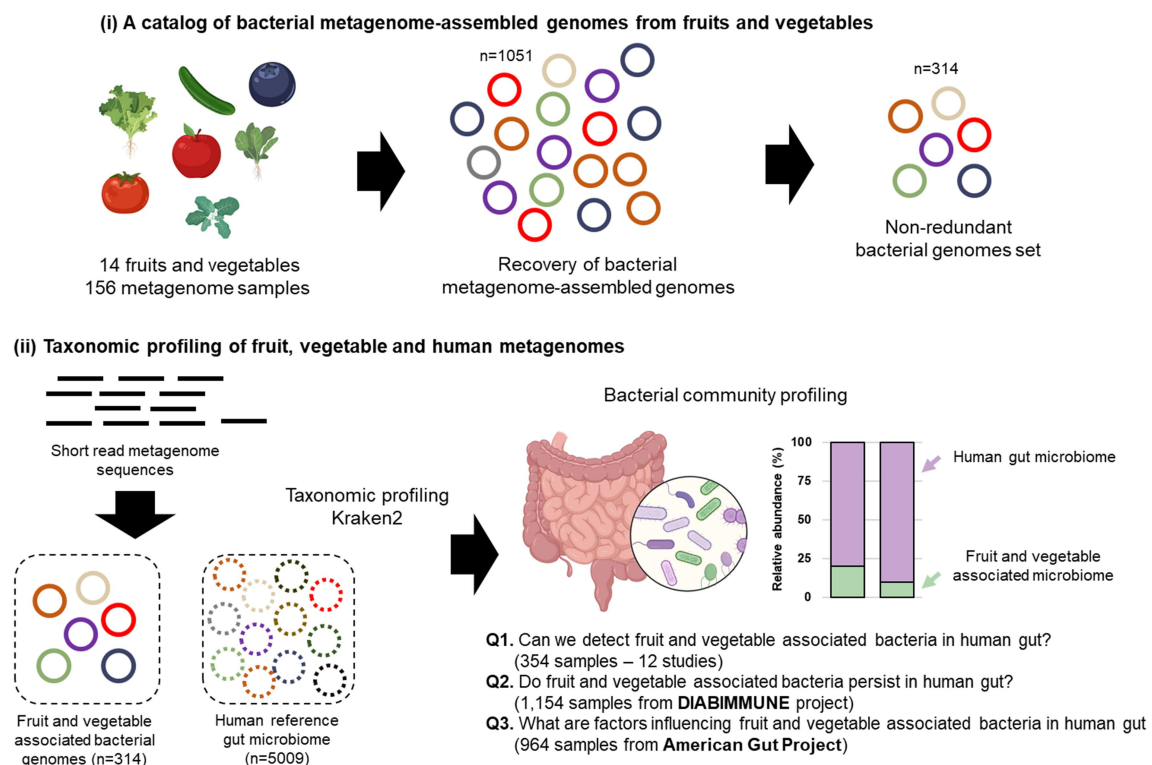
© 2023 The Author(s). Published with license by Taylor & Francis Group, LLC.

This is an Open Access article distributed under the terms of the Creative Commons Attribution License (<http://creativecommons.org/licenses/by/4.0/>), which permits unrestricted use, distribution, and reproduction in any medium, provided the original work is properly cited. The terms on which this article has been published allow the posting of the Accepted Manuscript in a repository by the author(s) or with their consent.

bioactive plant secondary metabolites that are known to influence the gut microbial diversity and composition,<sup>13</sup> but also a high diversity of microorganisms.<sup>14,15</sup> Therefore, it was hypothesized that fruits and vegetables serve as the main direct sources of environmental microbiota<sup>14,16</sup> and may modulate the composition and functionality of our gut microbiomes.<sup>17</sup> However, there has been no study to date to investigate the potential transfer of the natural fruit and vegetable microbiota to the human gut. Moreover, fruit and vegetable associated bacteria are likely underrepresented in the human gut because large-scale food microbiome metagenomes are needed.

The general questions to be answered are (i) Do fruit and vegetable associated bacteria contribute to the overall diversity of the gut microbiome? (ii) do these organisms persist over time in the human gut? and (iii) do specific factors including host age, frequency of fruit and vegetable consumption, and the diversity of cons

umed fruits and vegetables influence the fruit- and vegetable associated microbial communities in the human gut microbiome? To address these questions, we used a combination of bioinformatics tools to reconstruct representative genomes of fruit- and vegetable-associated bacteria from 156 fruit and vegetable metagenomes (Figure 1). The reconstructed genomes were used as a basis to investigate the prevalence of fruit- and vegetable-associated bacteria in 2,426 publicly available gut metagenomes including a large-scale longitudinal dataset. This approach provides an unprecedented opportunity to characterize the importance of indigenous fruit and vegetable microbiota, a neglected potential reservoir of environmental microbiota for the human gut. To the best of our knowledge, this is the first study to provide a foundation for the potential role of fruit- and vegetable-associated bacteria and fresh vegetable and fruit consumption on the development of the human gut microbiota.



**Figure 1.** Overview of the bioinformatic workflow for the recovery of metagenome-assembled genomes (MAGs) from fruits and vegetables and the detection of their presence in the gut. Using a total of 2,426 human gut metagenomes, this study attempted to address three research questions Q1 - can we detect fruit and vegetable associated bacteria in the human gut? Q2 - do fruit and vegetable associated bacteria persist in the human gut? Q3 - what are factors influencing fruit and vegetable associated bacteria in the human gut?

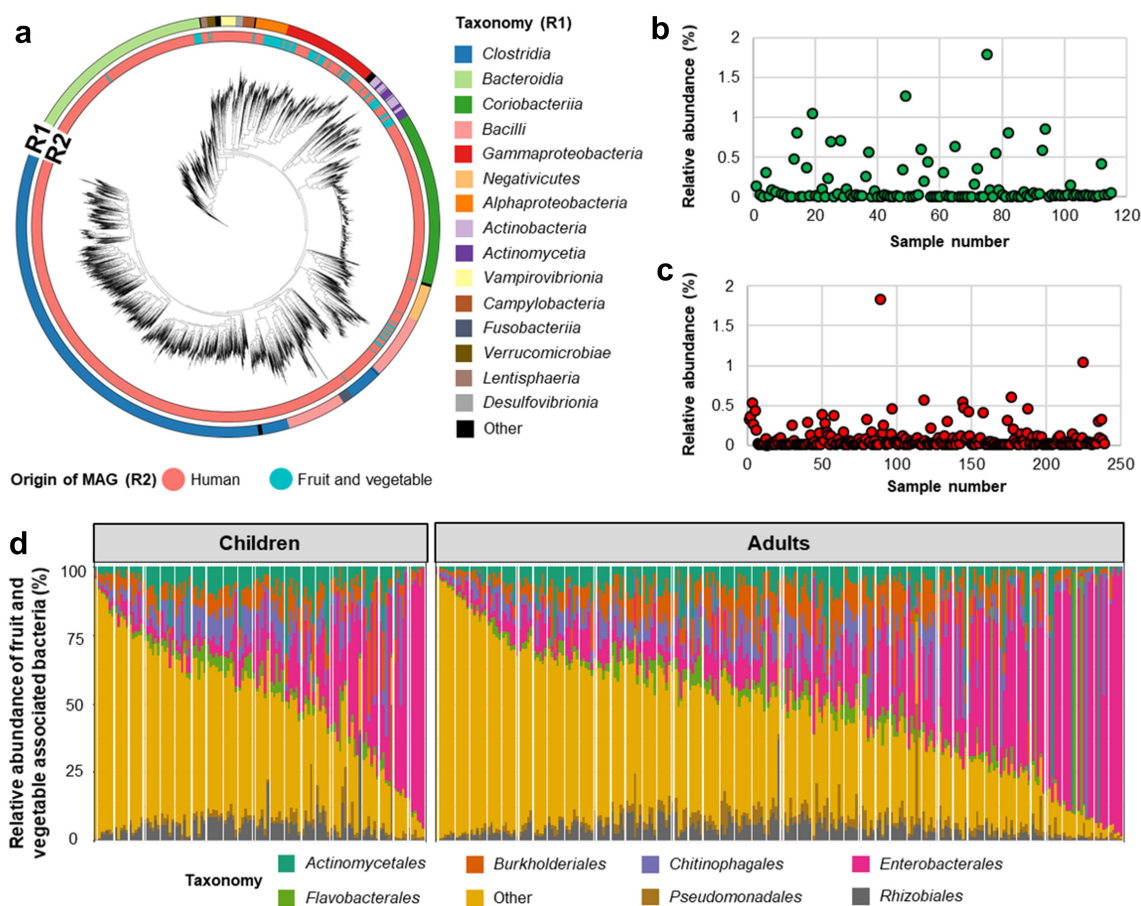
## Results and discussion

### Fruit and vegetable associated bacteria are detectable in the human gut

To define microbial genomes associated with fruits and vegetables, we performed metagenomic assembly and binning on 156 fruit and vegetable metagenomes, and recovered a total of 1,023 MAGs (metagenome-assembled genomes). Of the 1,023 MAGs, a total of 314 non-redundant MAGs with completeness higher than 70% and less than 10% contamination were obtained (Supplementary Table S1). In contrast to the recent human reference gut microbiome catalog, where more than half of the MAGs were assigned to the bacterial classes *Clostridia* ( $n = 2056$ ), *Bacteroidia* ( $n = 750$ ), and *Coriobacteria* ( $n = 716$ ), the obtained non-redu-

ndant MAGs recovered from fruits and vegetables primarily belonged to *Gammaproteobacteria* ( $n = 98$ ), *Alphaproteobacteria* ( $n = 78$ ), and *Actinomycetia* ( $n = 76$ , Figure 2a). An overview of the taxonomic profile at genus level revealed that 31 genera, including *Pseudomonas*, *Sphingomonas*, *Aeromicrobium*, and *Pantoea* had representatives in both the human gut and the fruit and vegetable microbiomes, whereas genomes from 79 genera, including *Microbacterium*, *Nocardioidea*, and *Brevundimonas*, could only be constructed from fruit and vegetable samples and not from human gut metagenome samples.

Fruit and vegetable associated bacteria harbor potentially beneficial functions for human health. Targeted analyses indicated the presence of genes known to positively affect human health, including



**Figure 2.** Taxonomical classification of plant and human-associated bacteria and their abundance in the human gut. Phylogenetic tree showing the taxonomical classification of fruit and vegetable and human gut-associated bacteria (a). Different colors in ring 1 (R1) indicate bacterial taxonomy and ring 2 (R2) indicates the origin of the MAGs. Relative abundance of fruit and vegetable associated bacteria and their abundance in children (b) and adults (c). Bar chart showing the relative abundance of fruit and vegetable associated bacterial composition at order level in the human gut (d). Relative abundance of fruit and vegetable associated bacterial genomes was obtained by using datasets that contained reads that only mapped to fruit and vegetable associated bacterial genomes. Different colors represent different order-level classifications. Less abundant bacterial orders were included in “others”.



the production of vitamin B, vitamin K, and short-chain fatty acids (Supplementary Data S1). A total of 128 MAGs harbored the *cobC* gene that encodes a cobalamin (vitamin B12) biosynthetic protein. This gene was highly prevalent in MAGs that belong to the bacterial orders *Sphingomonadales* (44.8%), *Rhizobiales* (46.4%), and *Pseudomonadales* (34.6%). Moreover, genes involved in vitamin K2 biosynthesis, i.e., *menABCDEF*, were also detected in MAGs assigned to the bacterial orders *Actinomycetales*, *Pseudomonadales*, and *Propionibacteriales*. Genes involved in short-fatty acid metabolism, such as acetate, butyrate, and propionate, were also present in the MAGs. For instance, a gene encoding acetate kinase (*ackA*) was detected in 71 MAGs mostly affiliated to *Actinomycetales* or *Enterobacterales*. Genes encoding propionate CoA-transferase and butyrate kinase that are involved in propionate and butyrate biosynthesis, respectively, were only detected in a small number of MAGs ( $n = 12$  and  $n = 1$ , respectively) that belong to *Burkholderiales* and *Rhizobiales*.

We next used these 314 non-redundant MAGs as a reference to detect fruit and vegetable-derived microbes in the human gut microbiome. We found that fruit- and vegetable-associated bacteria were consistently present at a low abundance in the human gut. First, we analyzed 354 human gut metagenome datasets from 12 studies to evaluate the presence of fruit and vegetable associated bacteria in the human gut. Using Kraken2 taxonomic profiling, on average, 88.9% of total metagenomic reads were mapped to the combined human and fruit and vegetable bacterial genome catalogs. The abundance of fruit- and vegetable-associated bacteria ranged between 0.004% and 3.604% in the gut microbiome of children and 0.003–3.122% in the gut microbiome of adults (Figure 2b, c). In alignment with a previous study, David and colleagues<sup>9</sup> suggested that foodborne microbes survive in the digestive system and could be metabolically active after consuming plant matter and dairy products. After subtracting only fruit and vegetable microbial reads, compositionally, fruit and vegetables associated bacteria found in the human gut were dominated by the bacterial orders *Enterobacterales* (mean of relative abundance

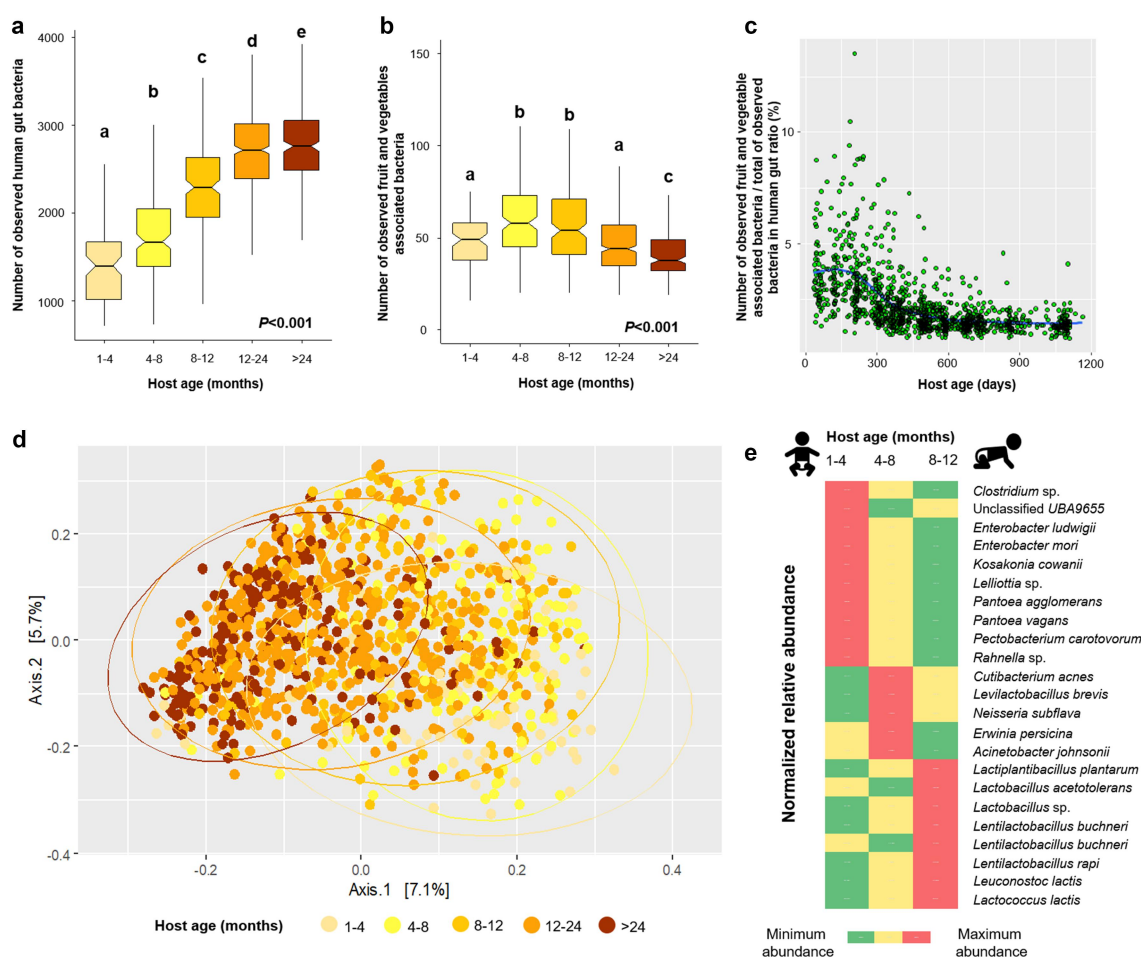
20.1% in children and mean of relative abundance 22.5% in adults), *Burkholderiales* (mean of relative abundance 7.4% in children and mean of relative abundance 9.1% in adults), *Actinomycetales* (mean of relative abundance 7.8% in children and mean of relative abundance 7.6% in adults) and *Lactobacillales* (mean of relative abundance 11.9% in children and mean of relative abundance 8.5% in adults) which were represented by the bacterial genera *Erwinia*, *Lactococcus*, *Enterobacter*, and *Microbacterium* (Figure 2d). These plant-associated bacteria have been previously isolated from the human gut and linked to human health due to their roles as probiotics and pathogens.<sup>18–20</sup> However, they are known for their plant beneficial effects as well as plant pathogens.<sup>21,22</sup> Here, we provided evidence that fresh produce-derived bacteria can be detected in the human gut and are a component of the human gut microbiota.

Microbes occurring in soil, plants, and humans are interconnected.<sup>14,23</sup> As the soil microbiome is an important reservoir of the plant microbiome, we suggest that agricultural practices not only have an effect on soil microbial diversity but also on the microbial diversity of fruits and vegetables and consequently on gut microbial diversity.<sup>14,15</sup> Therefore, it will be crucial to investigate how various plant cultivation methods affect the fruit and vegetable associated microbiota. For example, previous studies revealed that naturally occurring ecosystems support more complex microbial communities than intensively managed agricultural soils.<sup>15,24,25</sup> This might be reflected in the microbial diversity of fruits and vegetables. Moreover, fruits and vegetables that are cultivated hydroponically and aeroponically are expected to increase dramatically because such practices may extend the growing season and lessen exposure to soil diseases.<sup>26,27</sup> However, these cultivation methods also potentially decrease bacterial diversity in fruits and vegetables due to poor microbial complexities in the production environment in comparison to natural soil systems.<sup>28,29</sup> An interesting perspective would be to improve microbial diversity in the media used to grow plants in order to not only fulfill beneficial functions for the plant but also for humans consuming them.

### Fruit and vegetable associated bacteria contribute to the overall gut microbiota diversity and persist over time

Using a longitudinal study of the gut microbiome of children based on shotgun metagenome sequencing of monthly stool samples (DIABIMMUNE cohort), we further attempted to identify an overall contribution of fruit- and vegetable-associated bacteria to the overall bacterial diversity in the human gut. We observed that the bacterial diversity in the human gut significantly increased along with host age (Kruskal-Wallis test -  $P < .001$ , Figure 3a). Interestingly, the diversity of fruit and vegetable associated bacteria increased from 1-month-old to 12-month-old subjects, but then decreased from this

point onward reaching the lowest levels in subjects older than 24 months (Kruskal-Wallis test -  $P < .001$ , Figure 3b). Besides breastfeeding, the introduction of solid food, i.e., fruits and vegetables, is an early life event that contributes to changes and development of the gut microbiome.<sup>30,31</sup> In the DIABIMMUNE cohort, some of the children were already introduced to root vegetables ( $n = 71$  of 269), fruit ( $n = 81$  of 269), and vegetables ( $n = 25$  of 269) during the first 4 months (Supplementary Table S2). Moreover, common cooking practices to prepare homemade baby foods might not completely eliminate the indigenous plant microbiota.<sup>32</sup> Because foodborne microbes can survive in the digestive tract,<sup>9,33</sup> we speculate that an increase in the number of detected plant-associated



**Figure 3.** Contribution of fruit and vegetable associated bacteria to the diversity of the human gut microbiome. The box plots include the observed human gut-associated bacteria (a) and fruit and vegetable associated bacteria (b) based on the observed MAGs in the gut. The Kruskal-Wallis test followed by pairwise comparison ( $P < 0.05$ ) within different host ages are indicated by different letters above the boxplot. The scatter plot shows the ratio of the observed fruit and vegetable associated and human gut-associated bacterial metagenome-assembled genomes (MAGs) along the age gradient (c). Community clustering of fruit and vegetable associated bacteria in the human gut is shown using a two-dimensional PCoA plot and based on a Bray-Curtis dissimilarity matrix (d). LefSe analysis indicated fruit and vegetable associated bacterial MAGs that are enriched in different age groups (e).

bacteria in gut metagenomes of children occurs due to the transfer and colonization of the indigenous plant microbiota from home-made or raw fruit or vegetables that were consumed during the early weaning period. Fruit and vegetable associated bacteria contributed to an average of 2.2% (min: 0.8% and max: 13.6%, [Figure 3c](#)) of the overall bacterial diversity in the human gut.

Fruit and vegetable associated bacterial communities in the human gut changed over time along with the host age, visible at a clear clustering according to the gradient of age in the PCoA plot ([Figure 3d](#)). PERMANOVA assessments indicated that host age affected the fruit and vegetable associated bacterial community structure ( $P = .001$ ) but only explained 5.3% of the bacterial variation ([Figure 3d](#)). Interestingly, countries of origin of the infants also affected the fruit and vegetable associated bacterial community structure to a lesser degree ( $P = .001$ ,  $R^2 = 2.2\%$ ). This result could be due to different complementary feeding patterns between infants from different countries.<sup>34</sup> Bacterial taxa that enriched along the gradient were mostly Gram-positive bacteria, especially the bacterial genera *Lentilactobacillus*, *Lactobacillus*, and *Lactococcus*, which replaced the early life-dominating bacterial genera *Pantoea*, *Erwinia*, and *Acinetobacter* ([Figure 2d](#), [Supplementary Figure S1A](#)). *Pantoea agglomerans* strains originating from plants are equally able to colonize human hosts when compared to clinical strains.<sup>35,36</sup> We hypothesize that due to the presence of oxygen in the newborn gut,<sup>37</sup> facultative anaerobic *Gammaproteobacteria* i.e., *Pantoea*, *Erwinia*, and *Acinetobacter* which originate from fruit and vegetables can colonize in the gut of infants during the early weaning period. Then, due to the reduced oxygen concentration,<sup>38</sup> anaerobic bacteria, i.e., *Lentilactobacillus* and *Lactobacillus*, emerge during the 8<sup>th</sup> to 12<sup>th</sup> month.

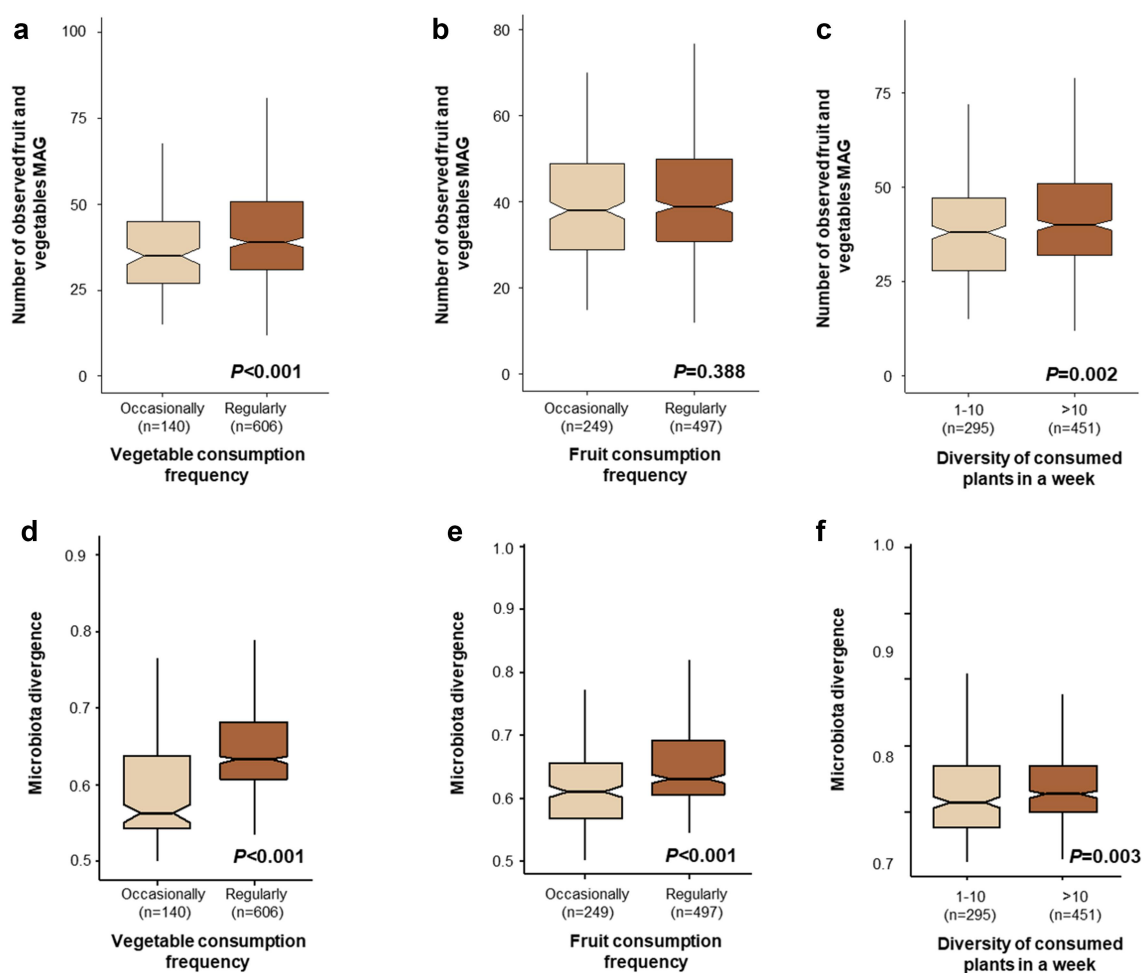
During infancy, the ecological succession of the gut microbiota is a dynamic process and then reaches a stable phase during childhood.<sup>5,38</sup> This pattern was confirmed in the present study, where the human-associated bacterial composition became more homogenous along with the increase in host age ([Supplementary Figure S1B](#)). The fruit and vegetable associated bacterial composition in

the human gut became more heterogeneous (i.e., higher divergence with respect to the median profile) along with the increase in host age ([Supplementary Figure S1C](#)). This might be explained by a more diverse food variety that is normally given with increasing infant age,<sup>39</sup> which can also vary between individuals, leading to the observed heterogeneity associated with host age.

### **Vegetable consumption frequency and the diversity of plants that are consumed affect fruit and vegetable associated bacterial richness in the human gut**

We hypothesized that the frequency and diversity of fruits and vegetables that are consumed might influence fruit- and vegetable-associated bacteria richness in the human gut. To test this hypothesis, we used a dataset from the American Gut Project, a large citizen science open platform study that collected self-reported dietary data (FFQs) and fecal samples.<sup>40</sup> A total of 746 samples had more than 500,000 reads that were assigned as bacterial using Kraken2. These samples were kept for further analysis to examine associations between gut bacterial diversity and plant consumption frequency and diversity.

Our analysis revealed that richness of fruit and vegetable associated bacteria in the human gut is associated with frequency and diversity of vegetables consumed by the subjects. For alpha diversity analysis, we calculated the number of detected fruit and vegetable associated MAGs in the human gut after subsampling the datasets to 500,000 reads. The number of detected fruit and vegetable associated MAGs was higher in the subjects that regularly consumed vegetables and those that eat more than 10 plants weekly in comparison to other groups (Kruskal-Wallis test -  $P < .05$ , [Figures 4a & 4c](#)). However, fruit consumption frequency did not have a significant effect on the number of detected fruit and vegetable associated MAGs (Kruskal-Wallis test -  $P = .388$ , [Figure 4b](#)). We repeated the alpha diversity analysis by subsampling the dataset from 300,000 to 5,000,000 reads and



**Figure 4.** Impact of vegetable consumption frequency, fruit consumption frequency, and diversity of consumed plants in a week on the number of observed fruit and vegetable associated bacteria and overall heterogeneity in fruit and vegetable bacterial community composition. The box plots show the observed fruit and vegetable associated MAGs in the gut (a-c). The additional plots show the overall heterogeneity in fruit and vegetable associated MAG composition in the gut (d-f).

found a consistent result (Supplementary Figure S2). Moreover, increased vegetable consumption frequency and diversity of consumed plants also increased relative abundance of fruit and vegetable associated bacteria in the human gut (Supplementary Figure S3). Here, we suggest that an increase in bacterial richness and relative abundance is potentially due to increased consumption of vegetables and more diverse vegetables. Aligned to our findings, rural Bedouins that regularly consume vegetables, fruits, and homemade fermented dairy products had a significantly higher bacterial diversity in comparison to urban Saudis, who reported eating vegetables and fruit just 1–2 times per week.<sup>41</sup> A similar notion was also previously shown by Milani and colleagues<sup>33</sup> who demonstrated

colonization of dairy cattle-associated bacteria in the human gut due to consumption of Parmesan cheese daily.

Comparing the divergence across the groups that had different consumption habits of fruits and vegetables and consumed a different diversity of plants revealed that the group that more frequently consumed fruits and vegetables as well as the group that consumed more diverse plants exhibited higher divergence values (Figure 4c–f). Fruits and vegetables are known to naturally contain a diverse microbiome, often with high cell numbers, that includes beneficial, pathogenic, and spoilage microbes.<sup>14</sup> Hence, consuming a wider variety of vegetables likely leads to exposure to a wider variety of microorganisms. Recently, exposure to indoor plant leaves has been confirmed to



lead to the transmission of plant-associated bacteria to the human skin.<sup>42</sup> Exposure to diverse bacteria via fruit and vegetable consumption could have a significant impact on the genetic diversity of the gut microbiota, in particular during childhood. Interestingly, Soto-Giron et al.<sup>16</sup> showed high genetic diversity and specific functions of plant-associated strains of *Pseudomonas* and *Lactobacillus*, and specific functions associated with probiotic-linked mechanisms. Limited exposure to diverse microbiota may influence immune system development. Indeed, well-designed intervention trials and large cohort studies focused on investigating the impact of consuming fresh produce and its associated bacteria during early life on the gut microbiota development are needed to produce robust insights into the potential function and contribution of ingested food microorganisms.

## Conclusions

In conclusion, this study provides the first evidence that fruit and vegetables represent a source of the developing gut microbiota. Intake of plant-associated bacteria through fruit and vegetable consumption is one of the main connections between the human microbiome and the environmental microbiome. Therefore, any factors that influence the indigenous fruit and vegetable microbiota, i.e., farming practices, breeding, and post-harvest treatments may directly/indirectly affect the gut microbiota composition. This is important because human activities have been already linked to a shift of diversity and evenness of the plant microbiota, which is also characterized by a decrease of host specificity and an increase of r-strategic microbes (fast-growing generalists and better adapted to environmental changes), pathogens, hypermutators, and antimicrobial resistance (AMR).<sup>43</sup> In contrast to r-strategists, K-strategists have slower development rates and are better at utilizing particular ecological niches. The latter provide a rich source of novel functions and are crucial for maintaining ecological stability. As suggested previously, due to human activities, r-strategic microbes will become more prevalent while K-strategists will continue to gradually disappear.<sup>43</sup> Examples reflecting the impact of global agriculture on fruit microbiomes were mentioned by

Wassermann et al.,<sup>44</sup> identifying a storage-specific resistome in exported apples, and by Wicaksono et al.,<sup>45</sup> showing the impact of cultivation on the apple and blueberry microbiota and enrichment of r-strategic microbes. On the other hand, our study provides the basis to develop joint solutions for plant and human health by application of probiotics as recently proposed.<sup>46</sup> Plant-derived probiotics can be applied in the field, post-harvest,<sup>47</sup> or even extracted from fruits and vegetables.<sup>16</sup> Overall, this study provides the first evidence of the interconnection between the plant and the gut microbiome. The connection is established mainly by members of *Enterobacterales*, *Burkholderiales*, and *Lactobacillales*, which, interestingly, harbor members of both plant and human probiotics. The results also highlight the importance to maintain plant-associated microbiota diversity in order to preserve it as a natural source for the development of human gut microbiota.<sup>46</sup>

## Methods

### Study design

To evaluate the presence and persistence of fruit- and vegetable-associated bacteria in the human gut, and the factors that might influence these communities, we first generated a bacterial genome collection from six previously published and two in-house fruit and vegetable metagenomic datasets (described below); in total, 156 samples were obtained. We focused only on metagenomes from the edible parts of fruits and vegetables. This genome collection served as a reference database to map gut metagenome reads and estimate the relative abundance of the corresponding fruit and vegetable associated bacteria in the human gut. The study design is outlined in **Figure 1**. First, the presence of fruit- and vegetable-associated bacterial genomes in the human gut was assessed based on 354 shotgun metagenome datasets from 12 studies across different cohorts. Second, to investigate the persistence of plant-associated bacteria in the human gut over time, we focused on the DIABIMMUNE project (<https://diabimmune.broadinstitute.org>), a longitudinal study representing the development of the microbiome in infants. Third, to analyze whether the consumption

frequency and the diversity of vegetables consumed influence plant-associated bacterial community structures and diversity in the human gut, we utilized a shotgun metagenome dataset from the American Gut project, a large citizen science open platform study that collected self-reported dietary data (FFQs) and fecal samples.<sup>40</sup>

### **Metagenome assembly and reconstruction of bacterial metagenome-assembled genomes from fruits and vegetables**

In total, 156 samples were obtained, spanning six public datasets (PRJEB33440, PRJNA476799, PRJNA291749, PRJNA506850, PRJNA593573, and PRJNA734564, Supplementary Table S3) and two in-house datasets. These samples originated from different fruits and vegetables, including radish (*Raphanus raphanistrum* subsp. *sativus*), lettuce (*Lactuca sativa*), apple (*Malus domestica*), spinach (*Spinacia oleracea*), blueberry (*Vaccinium corymbosum*), bayam (*Amaranthus* spp.), choy sum (*Brassica rapa* var. *parachinensis*), kai lan (*Brassica oleracea* var. *Alboglabra*), cucumber (*Cucumis sativus*), melon (*Cucumis melo* var. *Cantalupo*), kelp (*Laminaria abyssalis*), and others (lotus - *Lotus aduncus*, tomato - *Solanum lycopersicum*, olive - *Olea europaea*, black mission figs - *Ficus carica*).

To increase the recovery of bacterial metagenome-assembled genomes (MAGs) from the fruit and vegetable metagenomes, two binning methods, i.e., Maxbin2 v2.2.7 and MetaBAT2 v2.12.1<sup>48,49</sup> were used. Multiple bins recovered with these binning methods were aggregated using DASTool v1.1.1<sup>50</sup> with the parameter: `-score_threshold 0.3`. The metagenome-assembled genomes were then dereplicated using dRep v2.2.3<sup>51</sup> to obtain a non-redundant fruit and vegetable metagenome-assembled bacterial genome dataset. Finally, the quality of MAGs was assessed using CheckM v1.0.13.<sup>52</sup> Only medium-quality MAGs according to the current with at least 70% completeness and less than 10% contamination were kept for further analyses. Taxonomical information of each MAG was obtained using GTDB-Tk v1.4.1.<sup>53</sup> A phylogenetic tree was constructed using PhyloPhlAn v3.0.<sup>54</sup> Subsequently, the phylogenetic tree was visualized using the interactive tree of life software (iTOL).<sup>55</sup> We used DRAM<sup>56</sup> to predict

protein-coding sequences and perform gene annotation of fruit and vegetable associated bacterial genomes

### **Implementation of publicly available human metagenomes**

First, we selected 354 human gut metagenome datasets from 12 gut microbiome studies (Supplementary Table S4) to detect the presence of fruit- and vegetable-associated bacteria in the human gut across different cohorts. We analyzed stool metagenomes from “Children” (1 month to 12 years) and “Adults”. To investigate the persistence of plant-associated bacteria in the human gut over time, we further retrieved a longitudinal study representing the development of the microbiome in infants from the DIABIMMUNE project (<https://diabimmune.broadinstitute.org>). For three years, DIABIMMUNE collected stool samples, occasional blood samples, and regular questionnaires on the early life experiences of Finnish, Estonian, and Russian children. The dataset that consists of stool metagenomes ( $n = 1,154$ ) from 269 subjects was published previously.<sup>8,57</sup> The samples were stratified by infant age group (group 1 to group 5) defined as follows: group 1: infants with age between 1 and 4 months, group 2: infants with age between 4 and 8 months, group 3: infants with age between 8 and 12 months, group 4: infants with age between 12 and 24 months, and group 5: infants with age above 24 months. The American Gut project ( $n = 964$  metagenome)<sup>40</sup> was utilized to correlate microbiome community data to the consumption of fruit and vegetables and the diversity of vegetables that are consumed by the cohorts.

### **Taxonomic profiling of fruit, vegetable, and human metagenomes**

Taxonomic profiling was applied to the abovementioned 156 fruit and vegetable metagenomes as well as 2,426 human gut metagenomes. The resulting data was then subjected to taxonomic profiling using Kraken2 v2.0.9 to classify individual metagenomic reads by mapping all  $k$ -mers to the lowest common ancestor (LCA) of all reference genomes.<sup>58</sup> We used a non-redundant fruit and vegetable metagenome-assembled bacterial genome dataset as

described above as reference. This genome set was combined with the Human Reference Gut Microbiome.<sup>59</sup> Therefore, two bacterial genome groups were implemented 1) those that originated from fruit and vegetables and 2) those that are indigenous to the human gut microbiota. This combined genome set was used as a database which was constructed by Struo2 v.2.2.2<sup>60</sup> for taxonomic profiling within human metagenomes using Kraken2.

### Statistical analysis

Statistical analysis and creation of graphs were conducted in RStudio<sup>61</sup> unless stated otherwise. The bacterial community analysis was performed using phyloseq R packages.<sup>62</sup> To account for uneven sequencing depth, the datasets were normalized by rarefying to the same sequencing depth and using MetagenomeSeq's cumulative sum scaling (CSS)<sup>63</sup> for alpha and beta diversity analysis, respectively. Significant differences in alpha diversity estimates using the number of detected bacterial genomes were analyzed by a non-parametric (ranked-based) Kruskal – Wallis test. To investigate the effect of host age, fruit and vegetable diversity, and consumption frequency on the fruit and vegetable associated bacterial community structures in the human gut, we only used datasets that contained reads that mapped only to fruit and vegetable associated bacterial genomes. The normalized Bray – Curtis dissimilarity matrix was subjected to permutational ANOVA (PERMANOVA) to test for significant effects of factors on bacterial community structures. To estimate the variability in community structures within the respective groups, we used the divergence function from the “microbiome R” package. This function calculates divergence within groups with respect to the median profile.<sup>64</sup> Finally, we used a linear discriminant analysis effect size (LEfSe)<sup>65</sup> to identify differentially abundant bacterial taxa between different groups.

### Acknowledgments

Graphic elements for Figure 1 were obtained from BioRender (<https://biorender.com/>).

We thank HEDIMED Investigator group for the critical reading of the manuscript.

### Disclosure statement

MJSG and GVT are employed by Solarea Bio. The authors declare that the research was conducted in the absence of any commercial or financial relationships that could be construed as a potential conflict of interest.

### Funding

This research was funded by European Union's Horizon 2020 under the research and innovation programme under grant agreement No 874864 (HH and GB).

### ORCID

Suvi M. Virtanen  <http://orcid.org/0000-0002-2779-3384>

### Author contributions

GB and WAW conceived and designed the study. WAW performed bioinformatic and statistical analysis. WAW, TC, and GB wrote the manuscript. WAW, TC, and GB analyzed the data. AA, BW, MJSG, GVT, SV, MK, and HH critically read and commented on the manuscript. GB and HH are involved in project administration and funding acquisition. All authors have read and agreed to the published version of the manuscript.

### Data and materials availability

All data are available in the main text or the supplementary materials.

### References

1. Enav H, Bäckhed F, Ley RE. The developing infant gut microbiome: a strain-level view. *Cell Host & Microbe*. 2022;30(5):627–638. doi:10.1016/j.chom.2022.04.009.
2. Blaser MJ. The theory of disappearing microbiota and the epidemics of chronic diseases. *Nat Rev Immunol*. 2017;17(8):461–463. doi:10.1038/nri.2017.77.
3. Tanaka M, Nakayama J. Development of the gut microbiota in infancy and its impact on health in later life. *Allergol Int*. 2017;66(4):515–522. doi:10.1016/j.alit.2017.07.010.
4. Gohir W, Ratcliffe EM, Sloboda DM. Of the bugs that shape us: maternal obesity, the gut microbiome, and long-term disease risk. *Pediatr Res*. 2015;77(1–2):196–204. doi:10.1038/pr.2014.169.
5. Stewart CJ, Ajami NJ, O'Brien JL, Hutchinson DS, Smith DP, Wong MC, Ross MC, Lloyd RE, Doddapaneni H, Metcalf GA, et al. Temporal development of the gut microbiome in early childhood from

- the TEDDY study. *Nature*. 2018;562(7728):583–588. doi:10.1038/s41586-018-0617-x.
6. Stokholm J, Blaser MJ, Thorsen J, Rasmussen MA, Waage J, Vinding RK, Schoos AMM, Kunøe A, Fink NR, Chawes BL, et al. Publisher correction: maturation of the gut microbiome and risk of asthma in childhood. *Nat Commun*. 2018;9(1):1–10. doi:10.1038/s41467-018-03150-x.
  7. Le Chatelier E, Nielsen T, Qin J, Prifti E, Hildebrand F, Falony G, Almeida M, Arumugam M, Batto J-M, Kennedy S, et al. Richness of human gut microbiome correlates with metabolic markers. *Nature*. 2013;500(7464):541–546. doi:10.1038/nature12506.
  8. Kostic AD, Gevers D, Siljander H, Vatanen T, Hyötyläinen T, Hämäläinen A-M, Peet A, Tillmann V, Pöhö P, Mattila I, et al. The dynamics of the human infant gut microbiome in development and in progression toward type 1 diabetes. *Cell Host & Microbe*. 2015;17(2):260–273. doi:10.1016/j.chom.2015.01.001.
  9. David LA, Maurice CF, Carmody RN, Gootenberg DB, Button JE, Wolfe BE, Ling AV, Devlin AS, Varma Y, Fischbach MA, et al. Diet rapidly and reproducibly alters the human gut microbiome. *Nature*. 2014;505(7484):559–563. doi:10.1038/nature12820.
  10. Johnson AJ, Vangay P, Al-Ghalith GA, Hillmann BM, Ward TL, Shields-Cutler RR, Kim AD, Shmagel AK, Syed AN, Walter J, et al. Daily sampling reveals personalized diet-microbiome associations in humans. *Cell Host & Microbe*. 2019;25(6):789–802.e5. doi:10.1016/j.chom.2019.05.005.
  11. Dong TS, Gupta A. Influence of early life, diet, and the environment on the microbiome. *Clin Gastroenterol Hepatol*. 2019;17(2):231–242. doi:10.1016/j.cgh.2018.08.067.
  12. Vatanen T, Jabbar KS, Ruohtula T, Honkanen J, Avila-Pacheco J, Siljander H, Stražar M, Oikarinen S, Hyöty H, Ilonen J, et al. Mobile genetic elements from the maternal microbiome shape infant gut microbial assembly and metabolism. *Cell*. 2022;185(26):4921–4936.e15. doi:10.1016/j.cell.2022.11.023.
  13. Krautkramer KA, Fan J, Bäckhed F. Gut microbial metabolites as multi-kingdom intermediates. *Nat Rev Microbiol*. 2021;19(2):77–94. doi:10.1038/s41579-020-0438-4.
  14. Berg G, Erlacher A, Grube M. The edible plant microbiome: importance and health issues. In: *Principles of plant-microbe interactions*. Springer International Publishing; 2015. pp. 419–426. doi:10.1007/978-3-319-08575-3\_44.
  15. Wassermann B, Müller H, Berg G. An apple a day: which bacteria do we eat with organic and conventional apples? *Front Microbiol*. 2019;10:1629. doi:10.3389/fmicb.2019.01629.
  16. Soto-Giron MJ, Kim J-N, Schott E, Tahmin C, Ishoey T, Mincer TJ, DeWalt J, Toledo G. The edible plant microbiome represents a diverse genetic reservoir with functional potential in the human host. *Sci Rep*. 2021;11(1):1–14. doi:10.1038/s41598-021-03334-4.
  17. Serrano K, Bezruczyk M. Genome to gut: crop engineering for human microbiomes. *Nat Rev Microbiol*. 2023;21(3):1–1. doi:10.1038/s41579-022-00850-6.
  18. Davin-Regli A, Lavigne J-P, Pagès J-M. Enterobacter spp.: update on taxonomy, clinical aspects, and emerging antimicrobial resistance. *Clin Microbiol Rev*. 2019;32(4):e00002–19. doi:10.1128/CMR.00002-19.
  19. Gneiding K, Frodl R, Funke G. Identities of Microbacterium spp. encountered in human clinical specimens. *J Clin Microbiol*. 2008;46(11):3646–3652. doi:10.1128/JCM.01202-08.
  20. Mohamaden WI, Zhen-Fen Z, Hegab IM, Shang-Li S. Experimental infection in mice with *Erwinia persicina*. *Microb Pathog*. 2019;130:38–43. doi:10.1016/j.micpath.2019.01.050.
  21. Andrés-Barrao C, Alzubaidy H, Jalal R, Mariappan KG, de Zélicourt A, Bokhari A, Artyukh O, Alwutayd K, Rawat A, Shekhawat K, et al. Coordinated bacterial and plant sulfur metabolism in *Enterobacter* sp. SA187–induced plant salt stress tolerance. *Proc Natl Acad Sci USA*. 2021;118(46):e2107417118. doi:10.1073/pnas.2107417118.
  22. García-González T, Sáenz-Hidalgo HK, Silva-Rojas HV, Morales-Nieto C, Vancheva T, Koebnik R, Ávila-Quezada GD. *Enterobacter cloacae*, an emerging plant-pathogenic bacterium affecting chili pepper seedlings. *Plant Pathol J*. 2018;34(1):1. doi:10.5423/PPJ.OA.06.2017.0128.
  23. Sessitsch A, Wakelin S, Schloter M, Maguin E, Cernava T, Champomier-Verges M-C, Charles TC, Cotter PD, Ferrocino I, Kriaa A, et al. Microbiome interconnectedness throughout environments with major consequences for healthy people and a healthy planet. *Microbiol Mol Biol Rev*. 2023;e00212–22. doi:10.1128/membr.00212-22.
  24. Tsiafouli MA, Thébault E, Sgardelis SP, De Ruiter PC, Van Der Putten WH, Birkhofer K, Hemerik L, de Vries FT, Bardgett RD, Brady MV, et al. Intensive agriculture reduces soil biodiversity across Europe. *Glob Change Biol*. 2015;21(2):973–985. doi:10.1111/gcb.12752.
  25. Muñoz-Arenas LC, Fusaro C, Hernández-Guzmán M, Dendooven L, Estrada-Torres A, Navarro-Noya YE. Soil microbial diversity drops with land-use change in a high mountain temperate forest: a metagenomics survey. *Environ Microbiol Rep*. 2020;12(2):185–194. doi:10.1111/1758-2229.12822.
  26. Lakhari IA, Gao J, Syed TN, Chandio FA, Buttari NA. Modern plant cultivation technologies in agriculture under controlled environment: a review on aeroponics. *J Plant Interact*. 2018;13(1):338–352. doi:10.1080/17429145.2018.1472308.
  27. Sela Saldinger S, Rodov V, Kenigsbuch D, Bar-Tal A. Hydroponic agriculture and microbial safety of vegetables: promises, challenges, and solutions. *Horticulturae*. 2023;9(1):51. doi:10.3390/horticulturae9010051.



28. Rosberg AK, Gruyer N, Hultberg M, Wohanka W, Alsanius B. Monitoring rhizosphere microbial communities in healthy and pythium ultimum inoculated tomato plants in soilless growing systems. *Sci Hort (Amsterdam)*. 2014;173:106–113. doi:10.1016/j.scienta.2014.04.036.
29. Thomas P, Knox OG, Powell JR, Sindel B, Winter G. The hydroponic rockwool root microbiome: under control or underutilised? *Microorganisms*. 2023;11(4):835. doi:10.3390/microorganisms11040835.
30. Korpela K, de Vos WM. Early life colonization of the human gut: microbes matter everywhere. *Curr Opin Microbiol*. 2018;44:70–78. doi:10.1016/j.mib.2018.06.003.
31. Wang S, Ryan CA, Boyaval P, Dempsey EM, Ross RP, Stanton C. Maternal vertical transmission affecting early-life microbiota development. *Trends Microbiol*. 2020;28(1):28–45. doi:10.1016/j.tim.2019.07.010.
32. Wicaksono WA, Buko A, Kusstatscher P, Sinkkonen A, Laitinen OH, Virtanen SM, Hyöty H, Cernava T, Berg G. Modulation of the food microbiome by apple fruit processing. *Food Microbiol*. 2022;108:104103. doi:10.1016/j.fm.2022.104103.
33. Milani C, Duranti S, Napoli S, Alessandri G, Mancabelli L, Anzalone R, Longhi G, Viappiani A, Mangifesta M, Lugli GA, et al. Colonization of the human gut by bovine bacteria present in parmesan cheese. *Nat Commun*. 2019;10(1):1–12. doi:10.1038/s41467-019-09303-w.
34. Nucci AM, Virtanen SM, Sorkio S, Bärlund S, Cuthbertson D, Uusitalo U, Lawson ML, Salonen M, Berseth CL, Ormiston A, et al. Regional differences in milk and complementary feeding patterns in infants participating in an international nutritional type 1 diabetes prevention trial. *Matern Child Nutr*. 2017;13(3):e12354. doi:10.1111/mcn.12354.
35. Nadarasah G, Stavrinides J. Quantitative evaluation of the host-colonizing capabilities of the enteric bacterium *Pantoea* using plant and insect hosts. *Microbiology*. 2014;160(3):602–615. doi:10.1099/mic.0.073452-0.
36. Walterson AM, Stavrinides J, van der Meer JR. *Pantoea*: insights into a highly versatile and diverse genus within the enterobacteriaceae. *FEMS Microbiol Rev*. 2015;39(6):968–984. doi:10.1093/femsre/fuv027.
37. Guaraldi F, Salvatori G. Effect of breast and formula feeding on gut microbiota shaping in newborns. *Front Cell Infect Microbiol*. 2012;2:94. doi:10.3389/fcimb.2012.00094.
38. Bäckhed F, Roswall J, Peng Y, Feng Q, Jia H, Kovatcheva-Datchary P, Li Y, Xia Y, Xie H, Zhong H, et al. Dynamics and stabilization of the human gut microbiome during the first year of life. *Cell Host & Microbe*. 2015;17(5):690–703. doi:10.1016/j.chom.2015.04.004.
39. Choudhury S, Headey DD, Masters WA. First foods: diet quality among infants aged 6–23 months in 42 countries. *Food Policy*. 2019;88:101762. doi:10.1016/j.foodpol.2019.101762.
40. McDonald D, Hyde E, Debelius JW, Morton JT, Gonzalez A, Ackermann G, Aksenov AA, Behsaz B, Brennan C, Chen Y, et al. American gut: an open platform for citizen science microbiome research. *mSystems*. 2018;3(3):e00031–18. doi:10.1128/mSystems.00031-18.
41. Angelakis E, Yasir M, Bachar D, Azhar EI, Lagier J-C, Bibi F, Jiman-Fatani AA, Alawi M, Bakarman MA, Robert C, et al. Gut microbiome and dietary patterns in different Saudi populations and monkeys. *Sci Rep*. 2016;6(1):1–9. doi:10.1038/srep32191.
42. Mhuireach GÁ, Fahimipour AK, Vandegrift R, Muscarella ME, Hickey R, Bateman AC, Van Den Wymelenberg KG, Bohannan BJM. Temporary establishment of bacteria from indoor plant leaves and soil on human skin. *Environ Microbiome*. 2022;17(1):1–13. doi:10.1186/s40793-022-00457-7.
43. Berg G, Cernava T. The plant microbiota signature of the anthropocene as a challenge for microbiome research. *Microbiome*. 2022;10(1):1–12. doi:10.1186/s40168-021-01224-5.
44. Wassermann B, Abdelfattah A, Müller H, Korsten L, Berg G. The microbiome and resistome of apple fruits alter in the post-harvest period. *Environ Microbiome*. 2022;17(1):1–15. doi:10.1186/s40793-022-00402-8.
45. Wicaksono WA, Buko A, Kusstatscher P, Cernava T, Sinkkonen A, Laitinen OH, Virtanen SM, Hyöty H, Berg G. Impact of cultivation and origin on the fruit microbiome of apples and blueberries and implications for the exposome. *Microb Ecol*. 2022;86(2):973–984. doi:10.1007/s00248-022-02157-8.
46. Peixoto RS, Voolstra CR, Sweet M, Duarte CM, Carvalho S, Villela H, Lunshof JE, Gram L, Woodhams DC, Walter J, et al. Harnessing the microbiome to prevent global biodiversity loss. *Nat microbiol*. 2022;7(11):1726–1735. doi:10.1038/s41564-022-01173-1.
47. Wassermann B, Abdelfattah A, Cernava T, Wicaksono W, Berg G. Microbiome-based biotechnology for reducing food loss post harvest. *Curr Opin Biotechnol*. 2022;78:102808. doi:10.1016/j.copbio.2022.102808.
48. Kang DD, Li F, Kirton E, Thomas A, Egan R, An H, Wang Z. MetaBAT 2: an adaptive binning algorithm for robust and efficient genome reconstruction from metagenome assemblies. *PeerJ*. 2019;7:e7359. doi:10.7717/peerj.7359.
49. Wu Y-W, Simmons BA, Singer SW. MaxBin 2.0: an automated binning algorithm to recover genomes from multiple metagenomic datasets. *Bioinformatics*. 2016;32(4):605–607. doi:10.1093/bioinformatics/btv638.
50. Sieber CM, Probst AJ, Sharrar A, Thomas BC, Hess M, Tringe SG, Banfield JF. Recovery of genomes from metagenomes via a dereplication, aggregation and

- scoring strategy. *Nat microbiol.* 2018;3(7):836–843. doi:10.1038/s41564-018-0171-1.
51. Olm MR, Brown CT, Brooks B, Banfield JF. dRep: a tool for fast and accurate genomic comparisons that enables improved genome recovery from metagenomes through de-replication. *ISME J.* 2017;11(12):2864–2868. doi:10.1038/ismej.2017.126.
  52. Parks DH, Imelfort M, Skennerton CT, Hugenholtz P, Tyson GW. CheckM: assessing the quality of microbial genomes recovered from isolates, single cells, and metagenomes. *Genome Res.* 2015;25(7):1043–1055. doi:10.1101/gr.186072.114.
  53. Chaumeil P-A, Mussig AJ, Hugenholtz P, Parks DH, Hancock J. GTDB-Tk: a toolkit to classify genomes with the genome taxonomy database. *Bioinformatics.* 2020;36(6):1925–1927. doi:10.1093/bioinformatics/btz848.
  54. Asnicar F, Thomas AM, Beghini F, Mengoni C, Manara S, Manghi P, Zhu Q, Bolzan M, Cumbo F, May U, et al. Precise phylogenetic analysis of microbial isolates and genomes from metagenomes using PhyloPhlAn 3.0. *Nat Commun.* 2020;11(1):1–10. doi:10.1038/s41467-020-16366-7.
  55. Letunic I, Bork P. Interactive tree of life (iTOL) v4: recent updates and new developments. *Nucleic Acids Res.* 2019;47(W1):W256–9. doi:10.1093/nar/gkz239.
  56. Shaffer M, Borton MA, McGivern BB, Zayed AA, La Rosa SL, Solden LM, Liu P, Narrowe AB, Rodríguez-Ramos J, Bolduc B, et al. DRAM for distilling microbial metabolism to automate the curation of microbiome function. *Nucleic Acids Res.* 2020;48(16):8883–8900. doi:10.1093/nar/gkaa621.
  57. Vatanen T, Plichta DR, Somani J, Münch PC, Arthur TD, Hall AB, Rudolf S, Oakeley EJ, Ke X, Young RA, et al. Genomic variation and strain-specific functional adaptation in the human gut microbiome during early life. *Nat microbiol.* 2019;4(3):470–479. doi:10.1038/s41564-018-0321-5.
  58. Wood DE, Lu J, Langmead B. Improved metagenomic analysis with Kraken 2. *Genome Biol.* 2019;20(1):257. doi:10.1186/s13059-019-1891-0.
  59. Kim CY, Lee M, Yang S, Kim K, Yong D, Kim HR, Lee I. Human reference gut microbiome catalog including newly assembled genomes from under-represented Asian metagenomes. *Genome Med.* 2021;13(1):1–20. doi:10.1186/s13073-021-00950-7.
  60. Youngblut ND, Ley RE. Struo2: efficient metagenome profiling database construction for ever-expanding microbial genome datasets. *PeerJ.* 2021;9:e12198. doi:10.7717/peerj.12198.
  61. Core Team R. R: a language and environment for statistical computing. *R Found Stat Comput Vienna;* 2013.
  62. McMurdie PJ, Holmes S, Watson M. Phyloseq: an R package for reproducible interactive analysis and graphics of microbiome census data. *PloS One.* 2013;8(4):e61217. doi:10.1371/journal.pone.0061217.
  63. Paulson JN, Stine OC, Bravo HC, Pop M. Differential abundance analysis for microbial marker-gene surveys. *Nat Methods.* 2013;10(12):1200–1202. doi:10.1038/nmeth.2658.
  64. Lahti L, Shetty S. Introduction to the microbiome R package. 2018.
  65. Segata N, Izard J, Waldron L, Gevers D, Miropolsky L, Garrett WS, Huttenhower C. Metagenomic biomarker discovery and explanation. *Genome Biol.* 2011;12(6):1–18. doi:10.1186/gb-2011-12-6-r60.